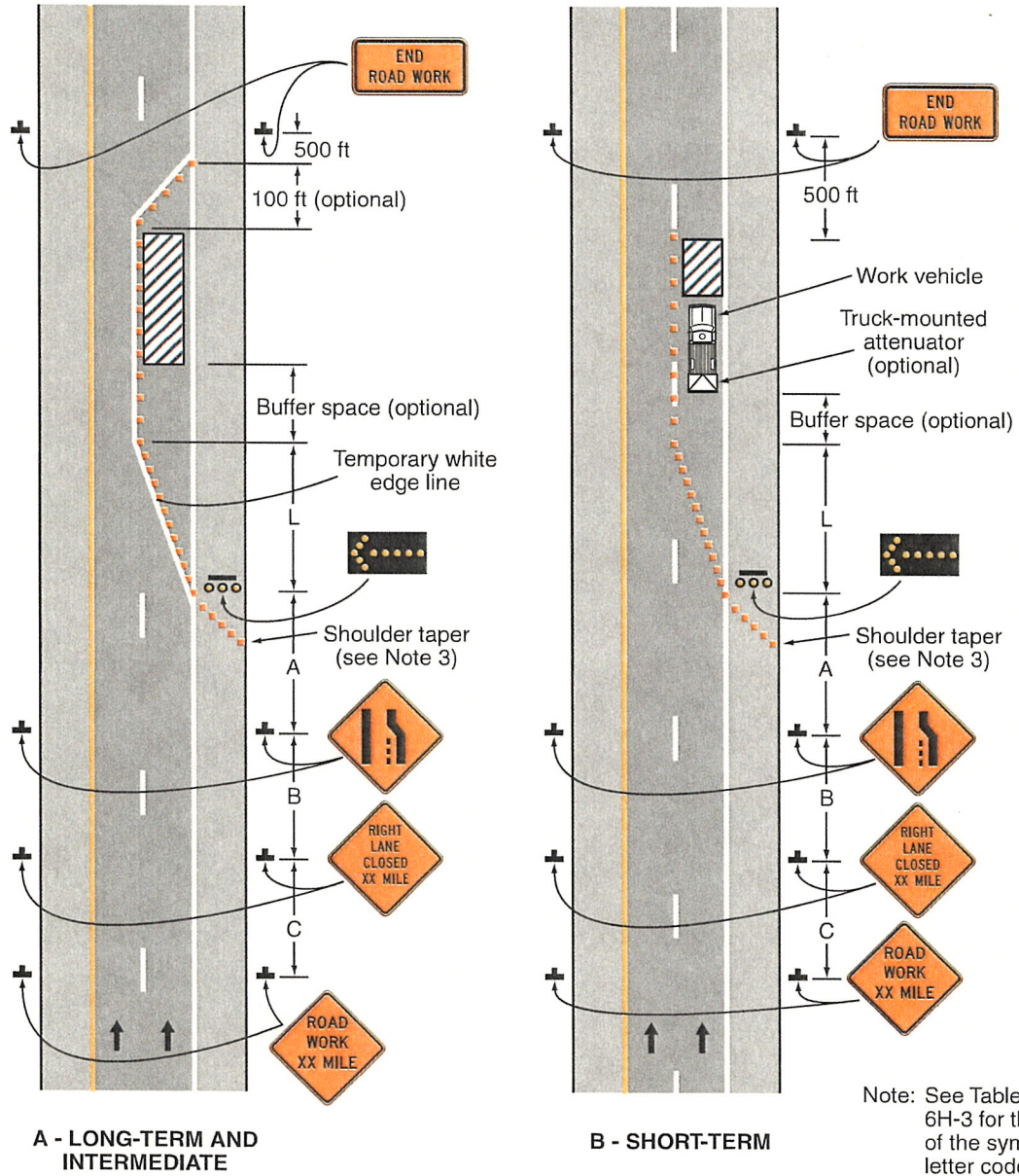


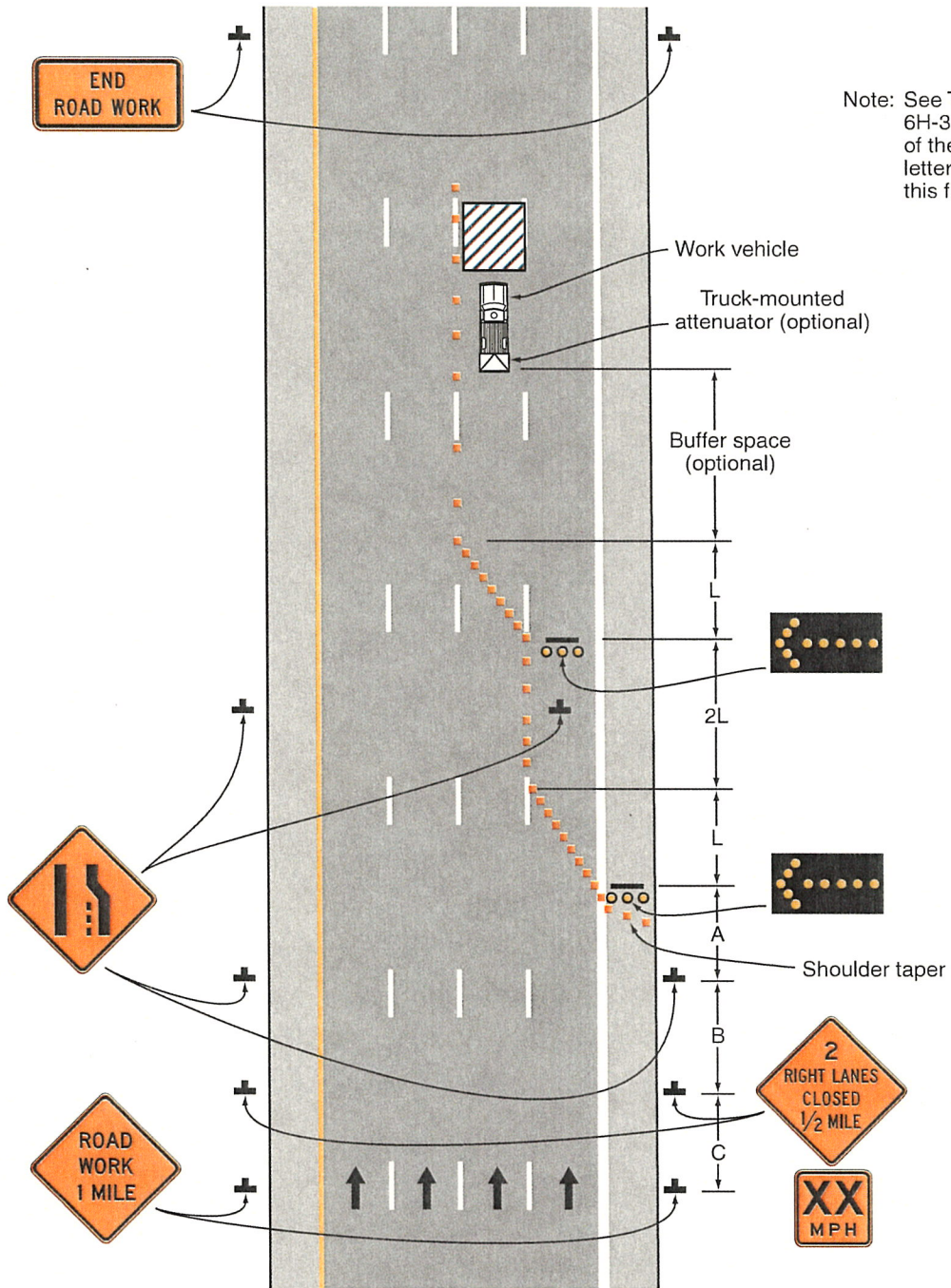
Figure 6H-33. Stationary Lane Closure on a Divided Highway (TA-33)



Note: See Tables 6H-2 and 6H-3 for the meaning of the symbols and/or letter codes used in this figure.

Typical Application 33

Figure 6H-37. Double Lane Closure on a Freeway (TA-37)



Typical Application 37

Figure 6H-36. Lane Shift on a Freeway (TA-36)

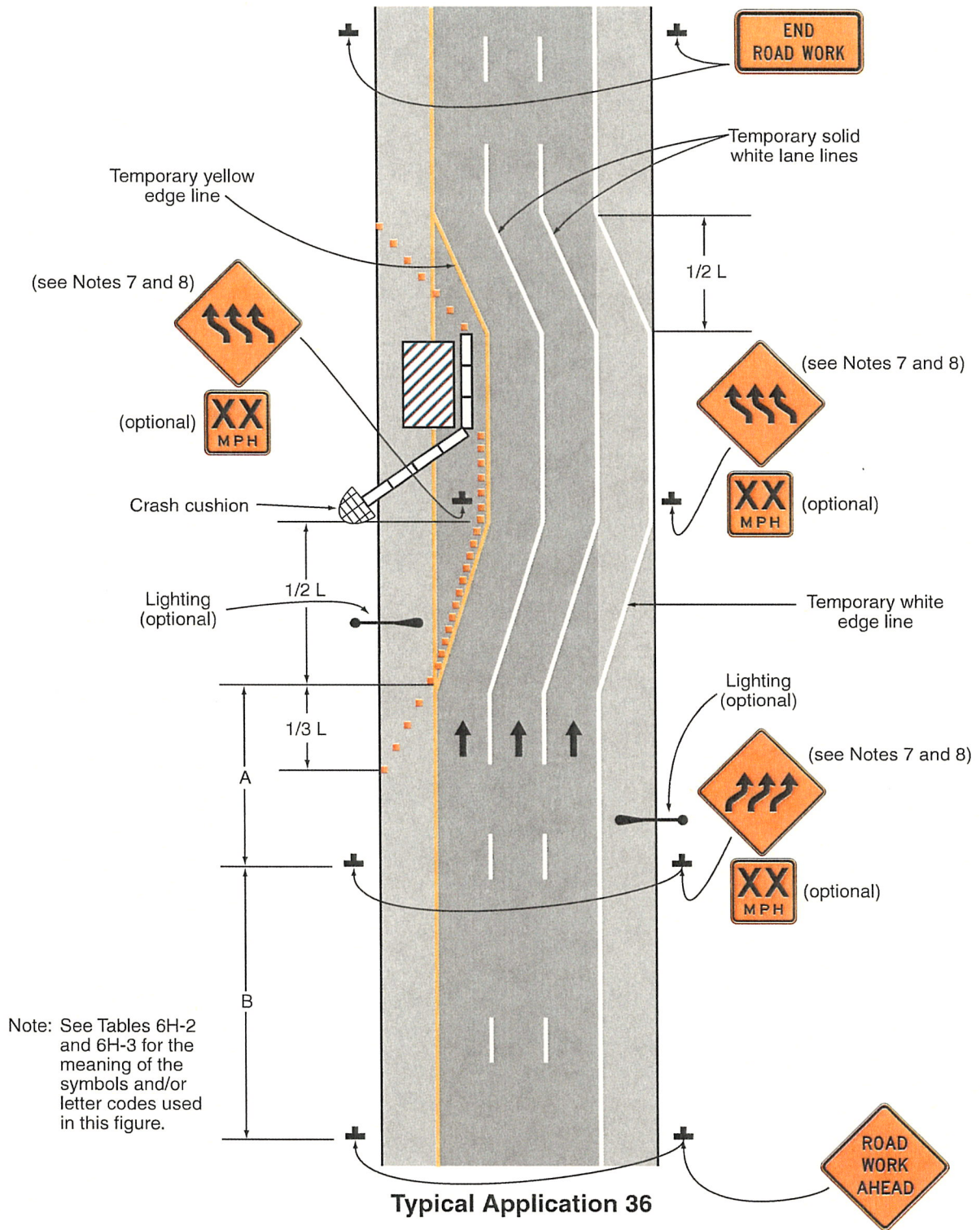
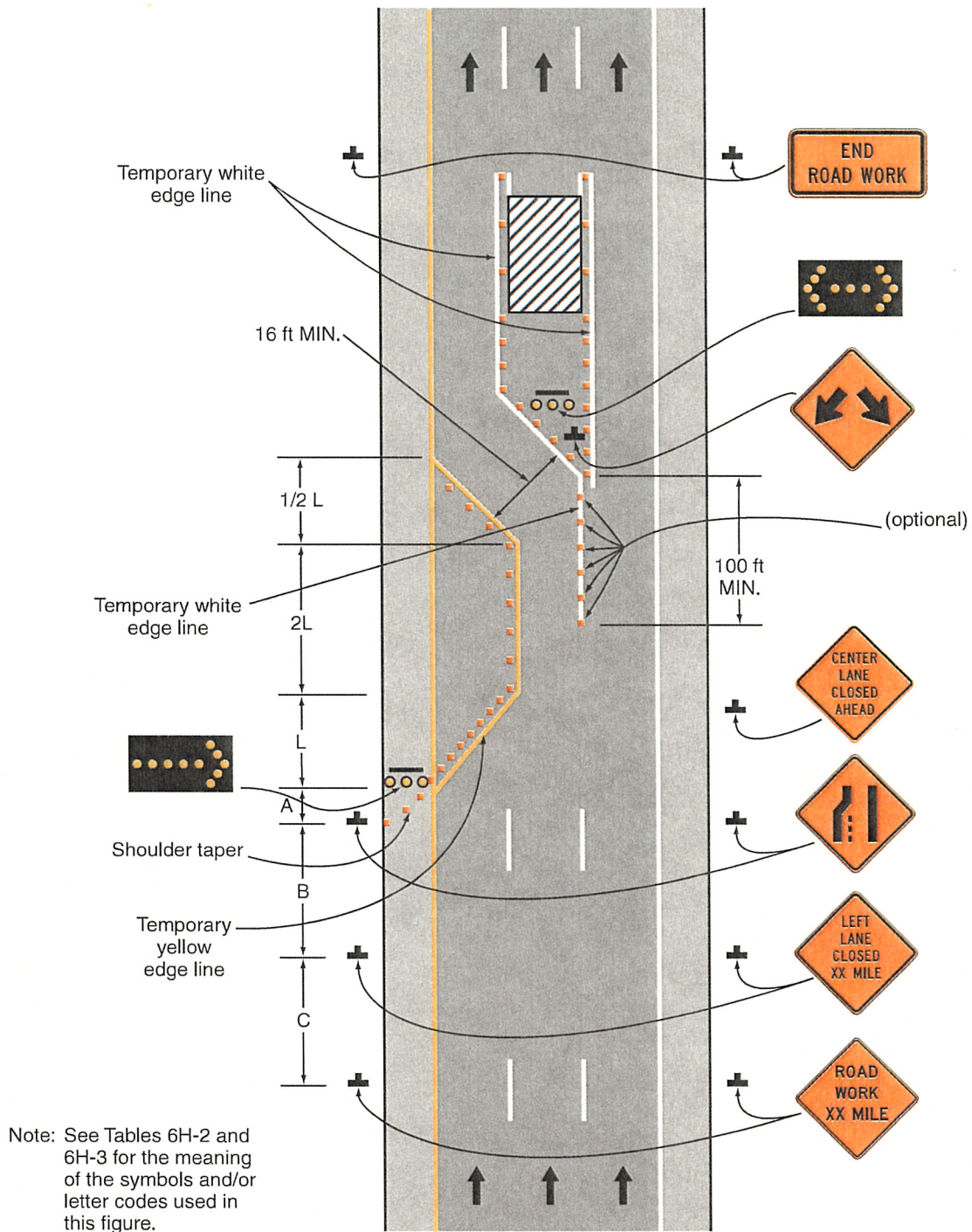


Figure 6H-38. Interior Lane Closure on a Freeway (TA-38)



Typical Application 38

Figure 6H-39. Median Crossover on a Freeway (TA-39)

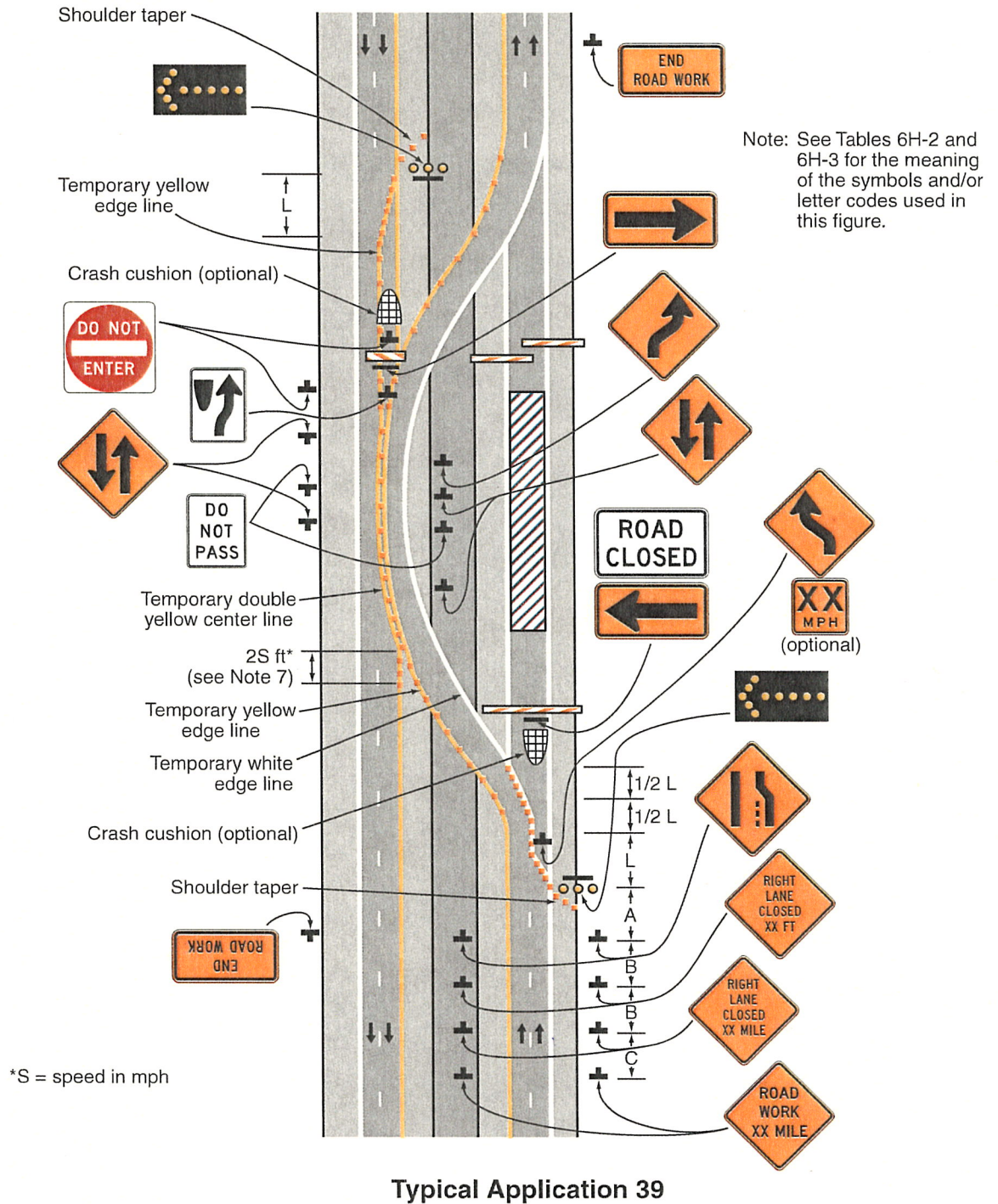
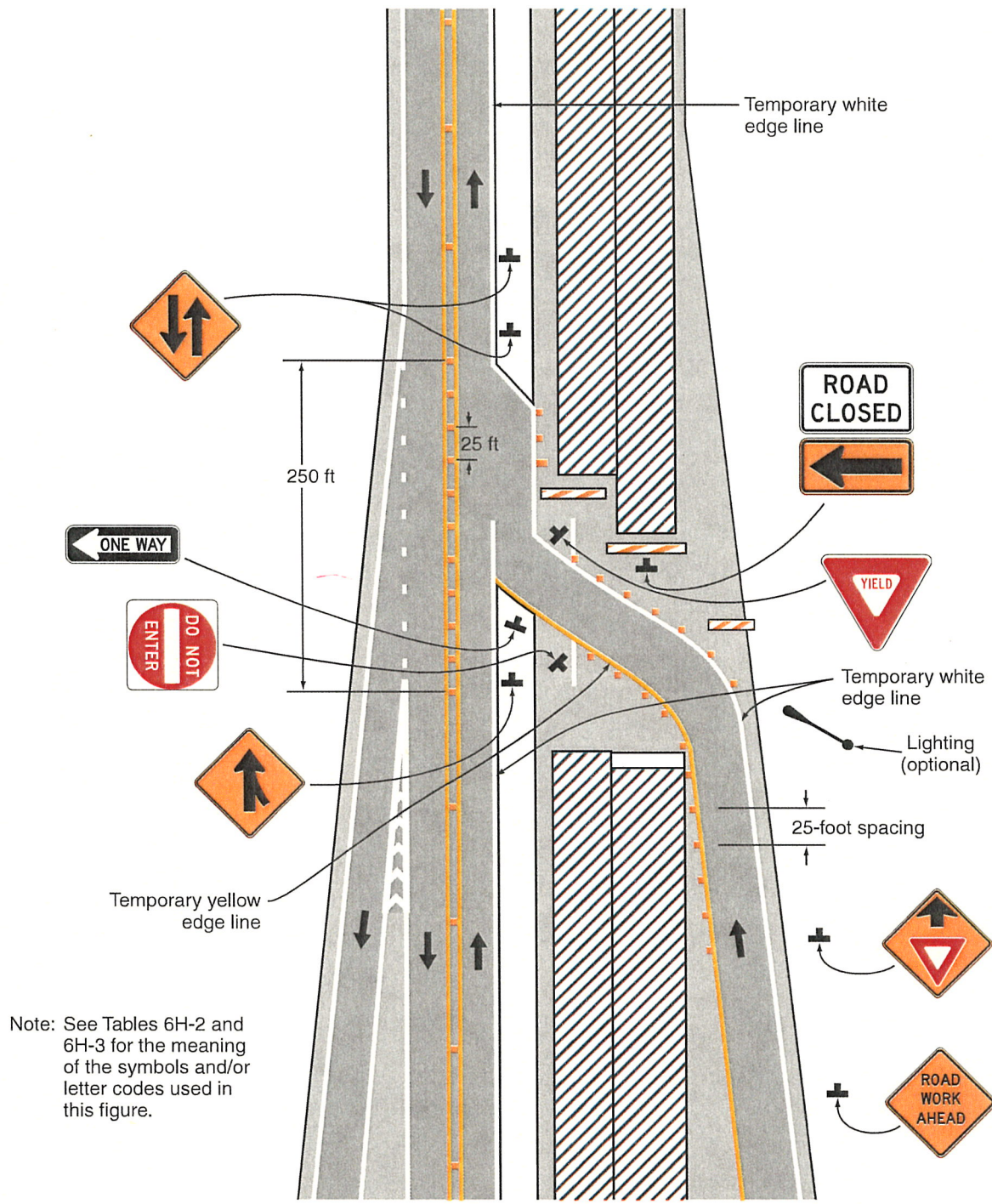


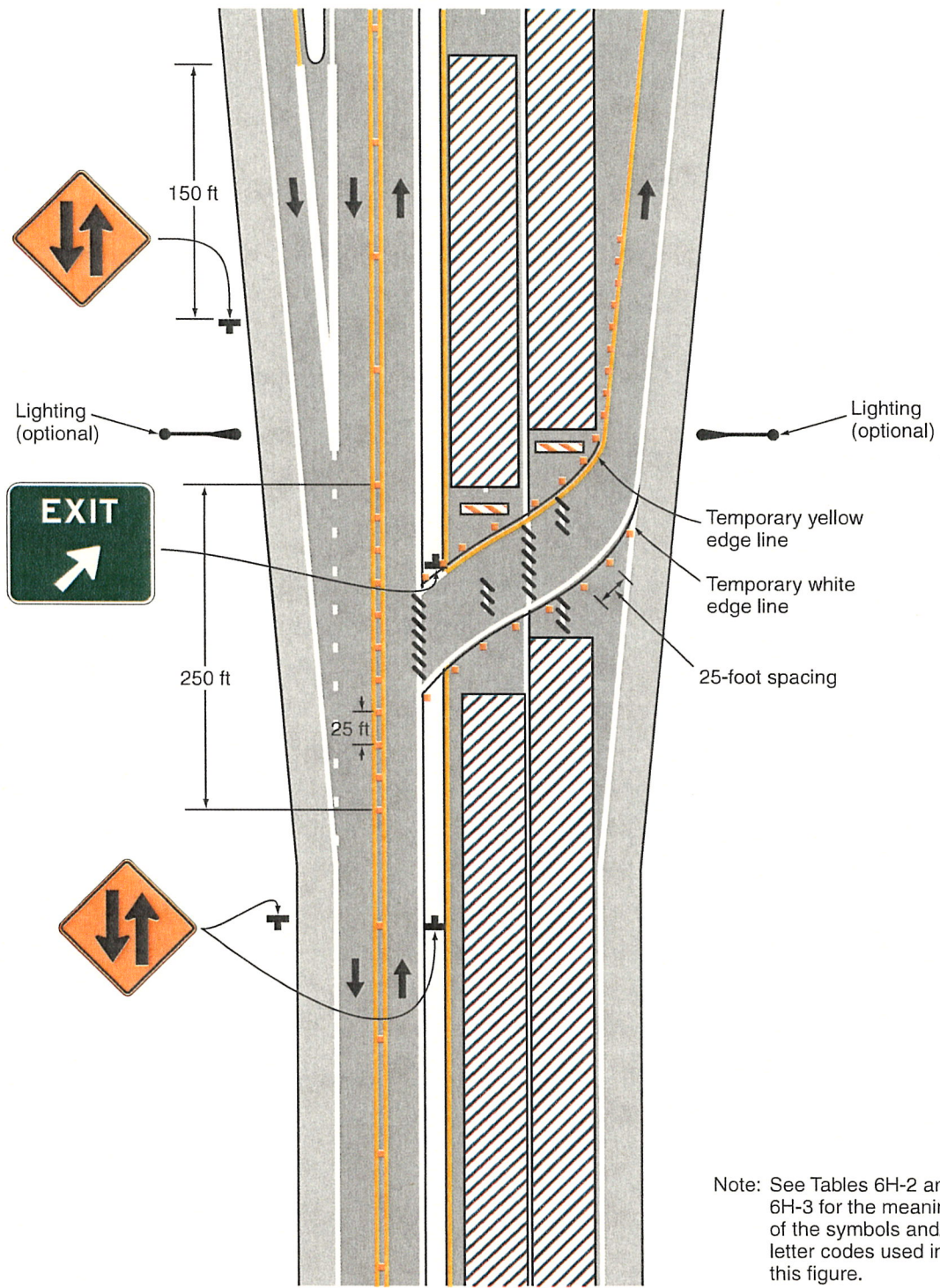
Figure 6H-40. Median Crossover for an Entrance Ramp (TA-40)



Note: See Tables 6H-2 and 6H-3 for the meaning of the symbols and/or letter codes used in this figure.

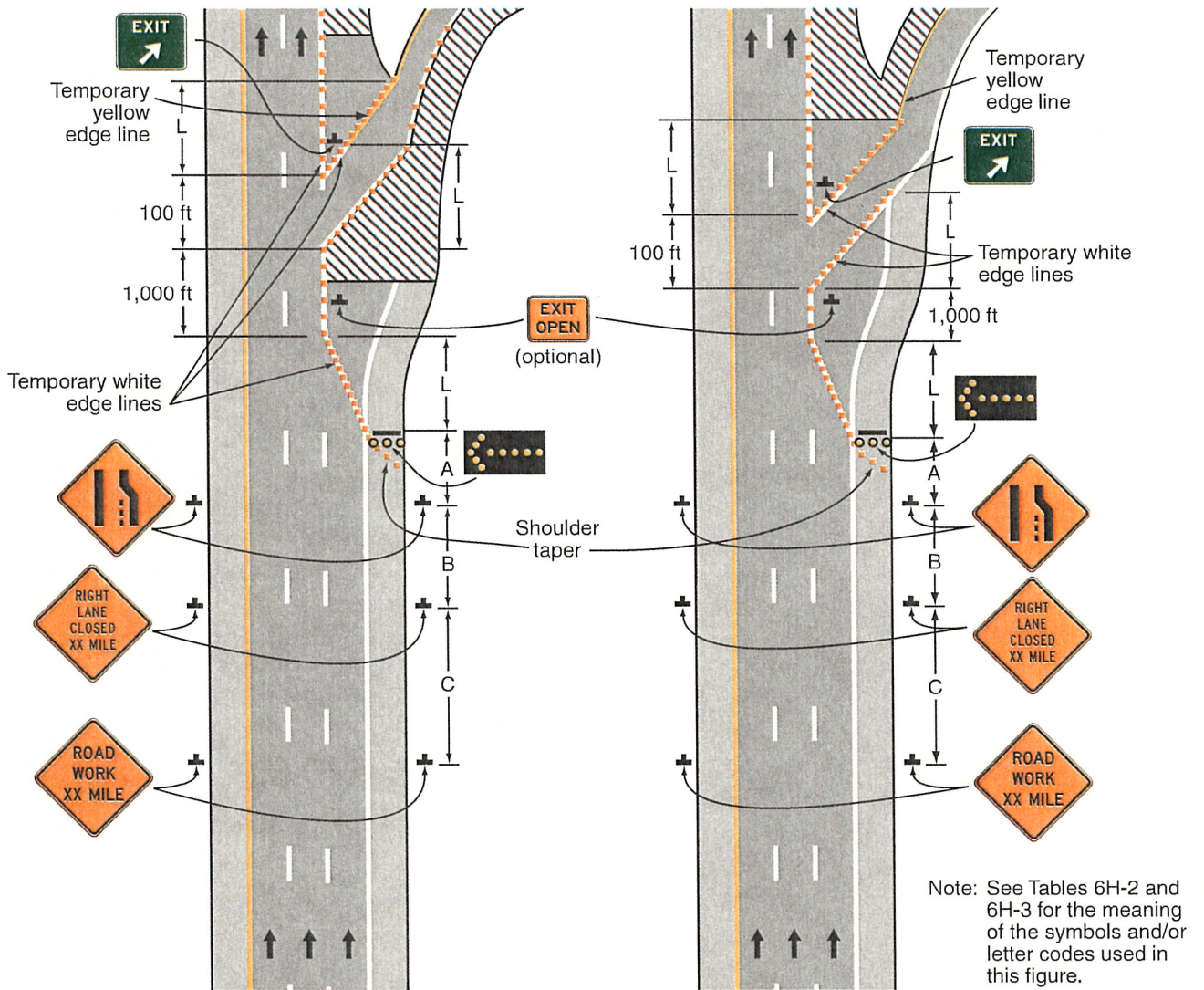
Typical Application 40

Figure 6H-41. Median Crossover for an Exit Ramp (TA-41)



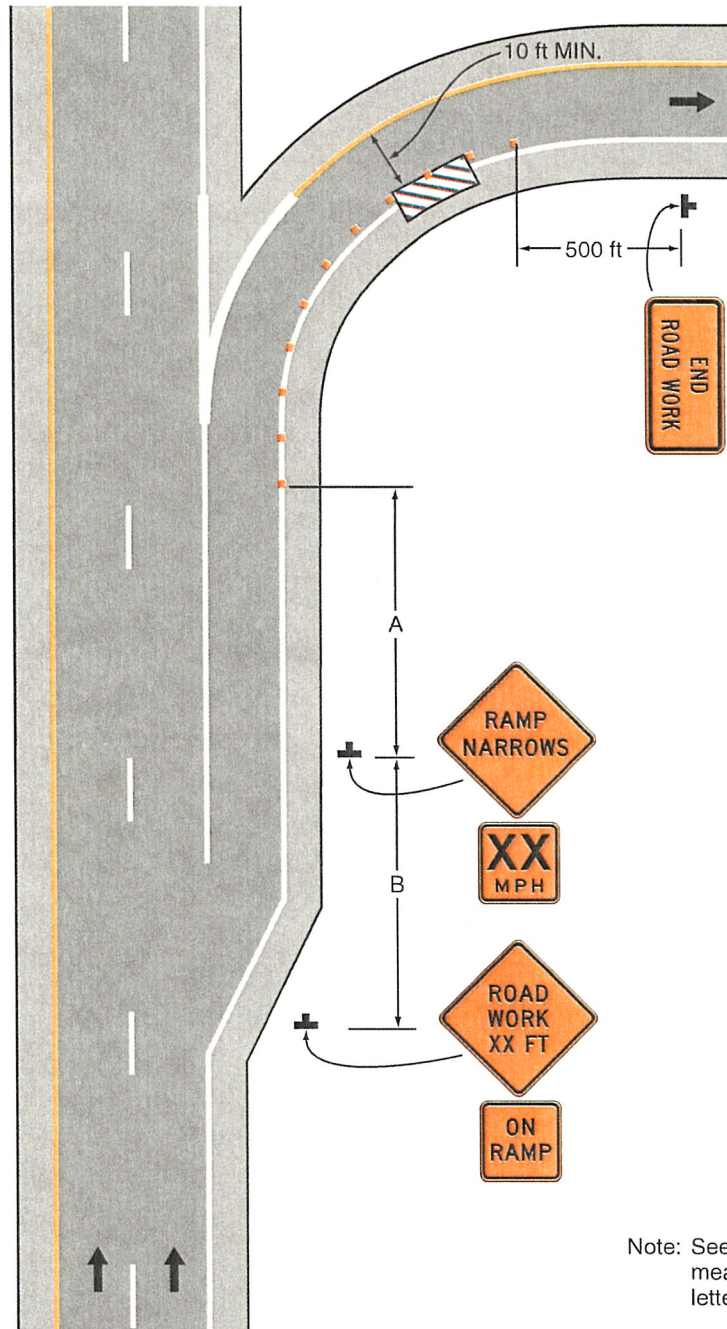
Typical Application 41

Figure 6H-42. Work in the Vicinity of an Exit Ramp (TA-42)



Typical Application 42

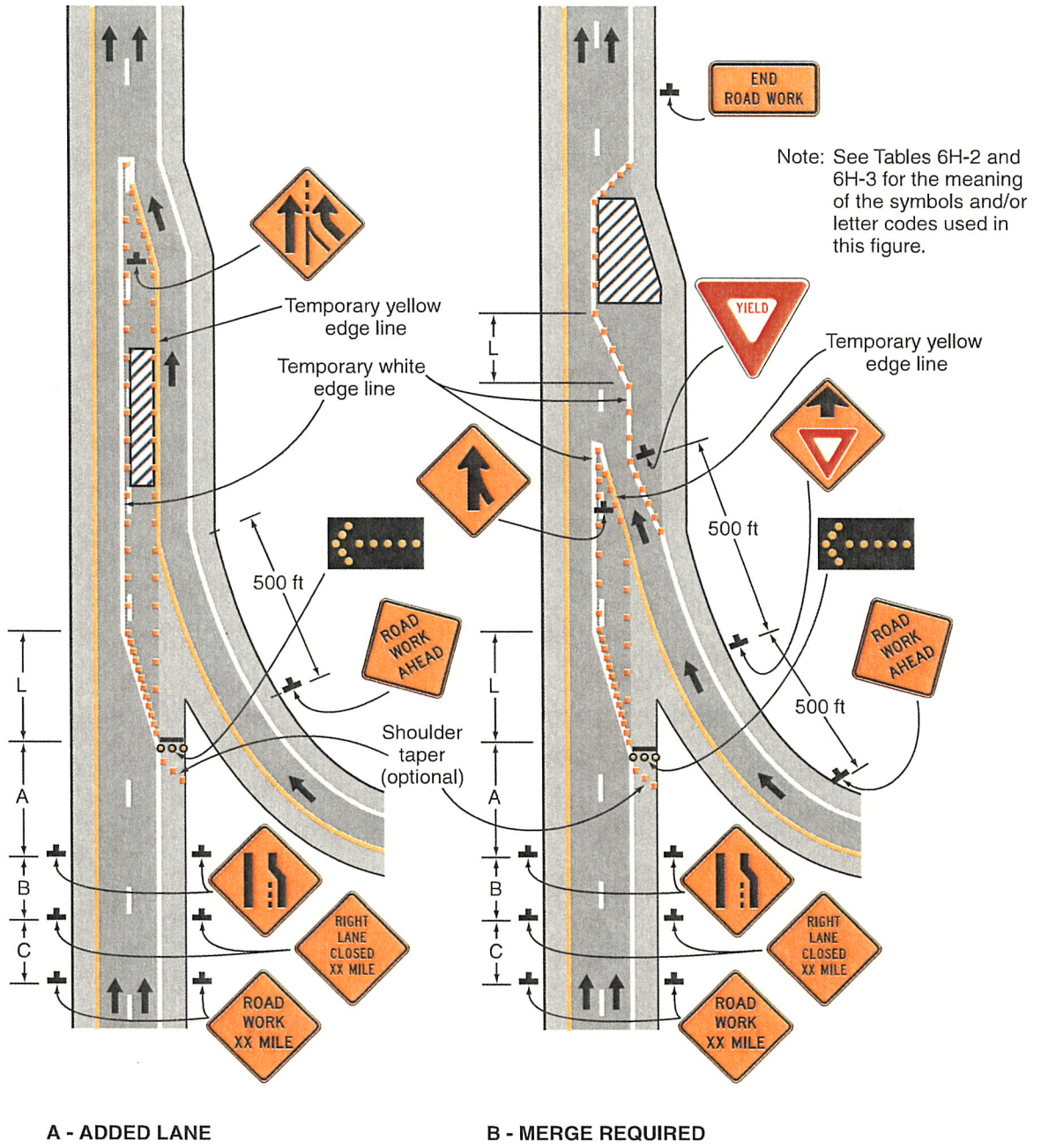
Figure 6H-43. Partial Exit Ramp Closure (TA-43)



Note: See Tables 6H-2 and 6H-3 for the meaning of the symbols and/or letter codes used in this figure.

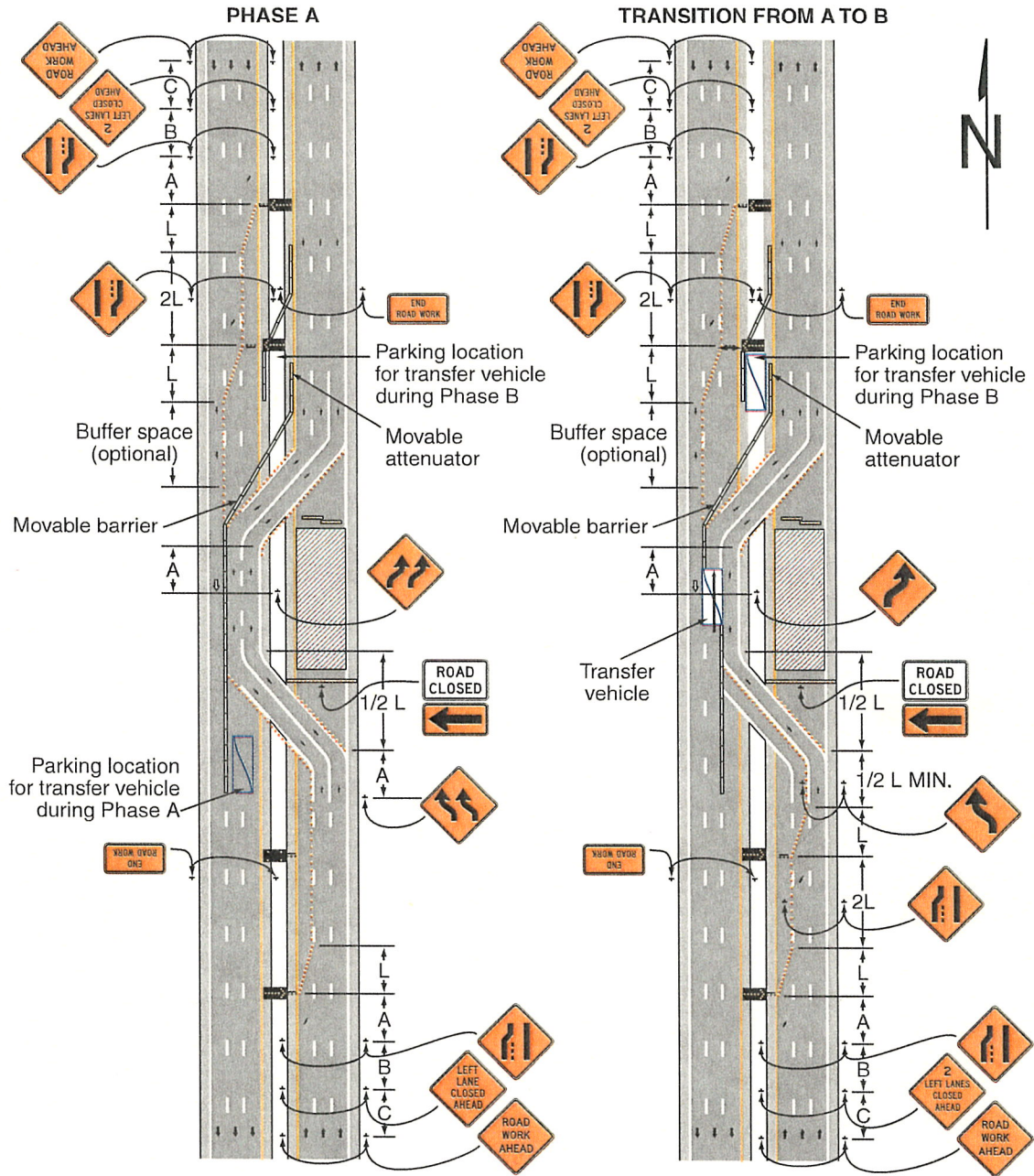
Typical Application 43

Figure 6H-44. Work in the Vicinity of an Entrance Ramp (TA-44)



Typical Application 44

Figure 6H-45. Temporary Reversible Lane Using Movable Barriers (TA-45)



Typical Application 45

Note: See Tables 6H-2 and 6H-3 for the meaning of the symbols and/or letter codes used in this figure. Although leader lines point to the signs on the right-hand side of the roadway, most of these signs should be installed on both sides of the roadway.